



HIGHLIGHTS

Product type:	Modular Hotel
Description:	Three modular hotel wings consisting of 18 hotel rooms per wing of 54 total hotel rooms. The wings could also be used as modular dormitories, workforce housing, man camps or reconfigured for other uses.
Year Built:	2011
Location:	Williston , ND
Other Specifications:	Included with each wing is a laundry room , utility room and mechanical room.
Price:	\$ 1 050 000
Price Detailed	\$350,000 per wing or \$1,050,000 for three wings.
Transportation:	Each hotel room is a 10'X17' modular shipping unit. Pricing based on transportation specifications as the units could be shipped with the roofs or without the roofs.
Construction:	Wood Frame
Code:	2009 IBC, 2011 NEC,2009 IMC,2009

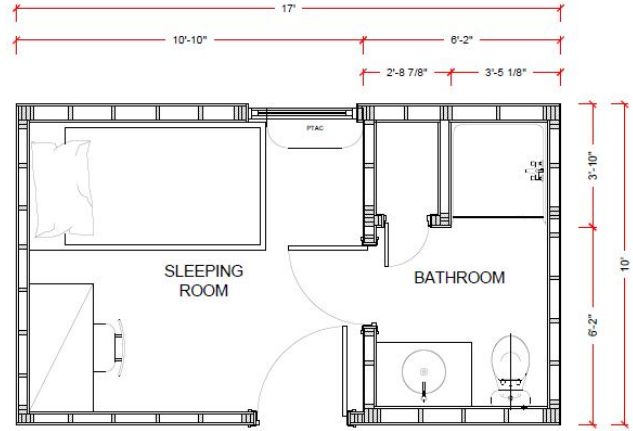
Kyle Hexom
+1 701 580 5496
sales@hexommb.com



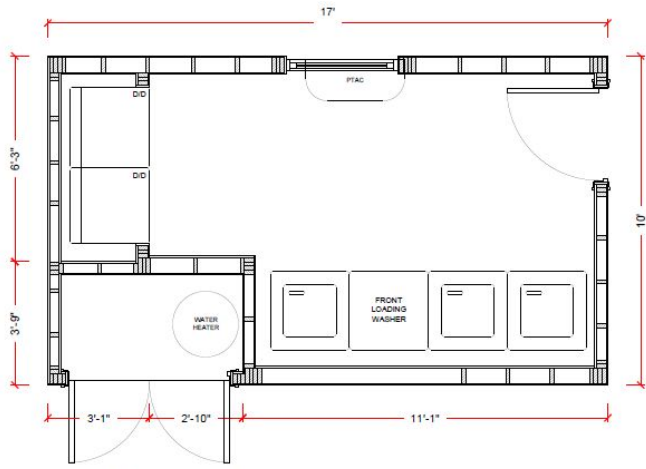
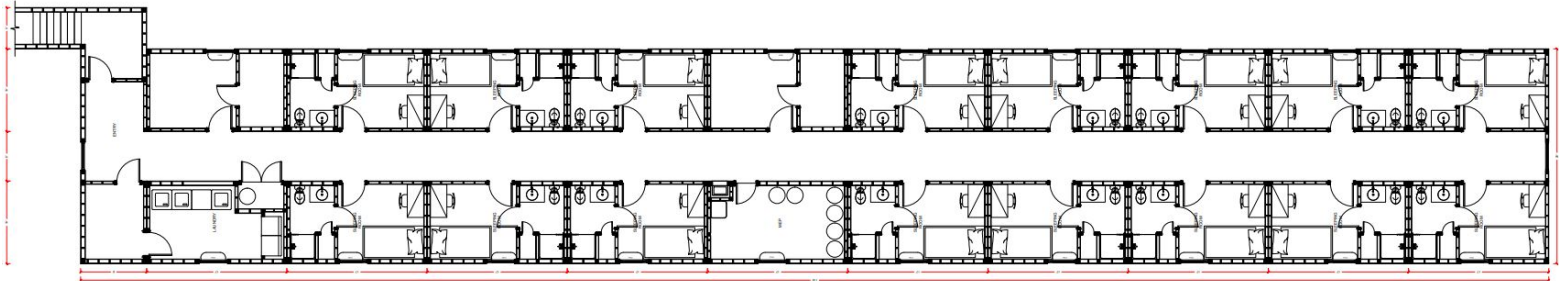
Save Money with Used Modular Solutions for Remote Workforce Housing and Commercial Use.

www.hexommodularbuildings.com

FLOOR PLAN



A1 SLEEPING UNIT
SCALE 1" : 2'



LAUNDRY UNIT
SCALE 1" : 2'

Kyle Hexom
+1 701 580 5496
sales@hexommb.com

Save Money with Used Modular Solutions for Remote Workforce Housing and Commercial Use.

www.hexommodularbuildings.com



WESTERN LODGE

Modular Hotel

WILLISTON , ND

\$ 1 050 000

ABOVE



Kyle Hexom
+1 701 580 5496
sales@hexommb.com

Save Money with Used Modular Solutions for Remote Workforce Housing and Commercial Use.

www.hexommodularbuildings.com



EXTERIOR



Kyle Hexom
+1 701 580 5496
sales@hexommb.com

Save Money with Used Modular Solutions for Remote Workforce Housing and Commercial Use.

www.hexommodularbuildings.com



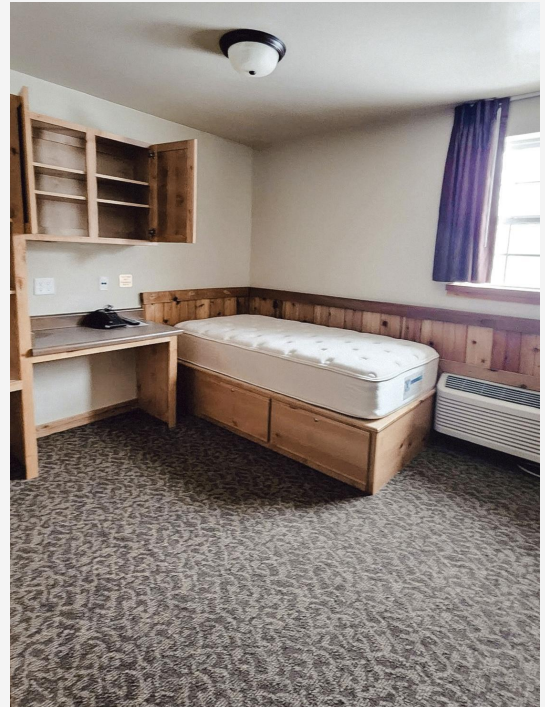
WESTERN LODGE

Modular Hotel

WILLISTON , ND

\$ 1 050 000

INTERIOR



Kyle Hexom
+1 701 580 5496
sales@hexommb.com



Save Money with Used Modular Solutions for Remote Workforce Housing and Commercial Use.

www.hexommodularbuildings.com